

PAD P4



More choice more control more possibilities



Main picture. A P4 in a suburban setting.

Top. The support core.

Bottom. Optional roof solar panels.



A Pad P4 is essentially a 100 - 200 square metre, 3 - 4 bedroom detached house that can be pretty much any shape or configuration you need. A choice of rooms from a range of suppliers means you can build a home that completely suits your lifestyle. And because it's easy to change, it will always be exciting and perfect for every stage of your life.

PAD

Built for life™
www.padlife.co.uk



Main picture/Top. A P₄ in a three storey, urban configuration.
Bottom. A kitchen design from the Pad range.

Each room is made in a factory so it has the build quality of a German car and arrives in perfect condition. And a lot less components are taken to site so a Pad home is quicker and easier to build.

The rooms are all independent so you can change them without turning your life upside down and every one is designed and built by a specialist manufacturer.

PAD

Built for life™
www.padlife.co.uk



Main picture/Bottom. A P4 in a rural setting.
Top. View from the first floor.

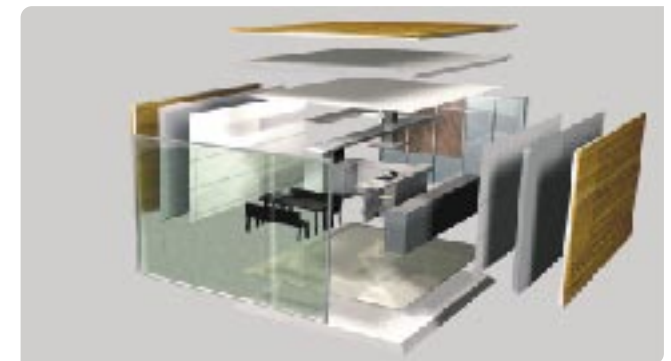


Because the P4 is flexible it can be designed to make the most of the space you've got, whether it's rural, urban or suburban.

You might need lots of entertaining space or have specific live/work requirements. We have beautifully designed home offices, entertainment spaces, kitchens and bathrooms.

PAD

Built for life™
www.padlife.co.uk



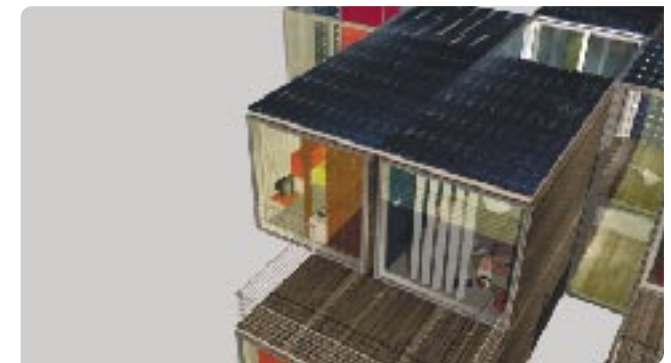
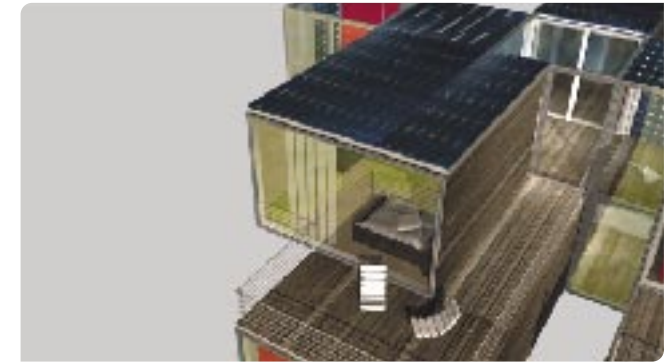
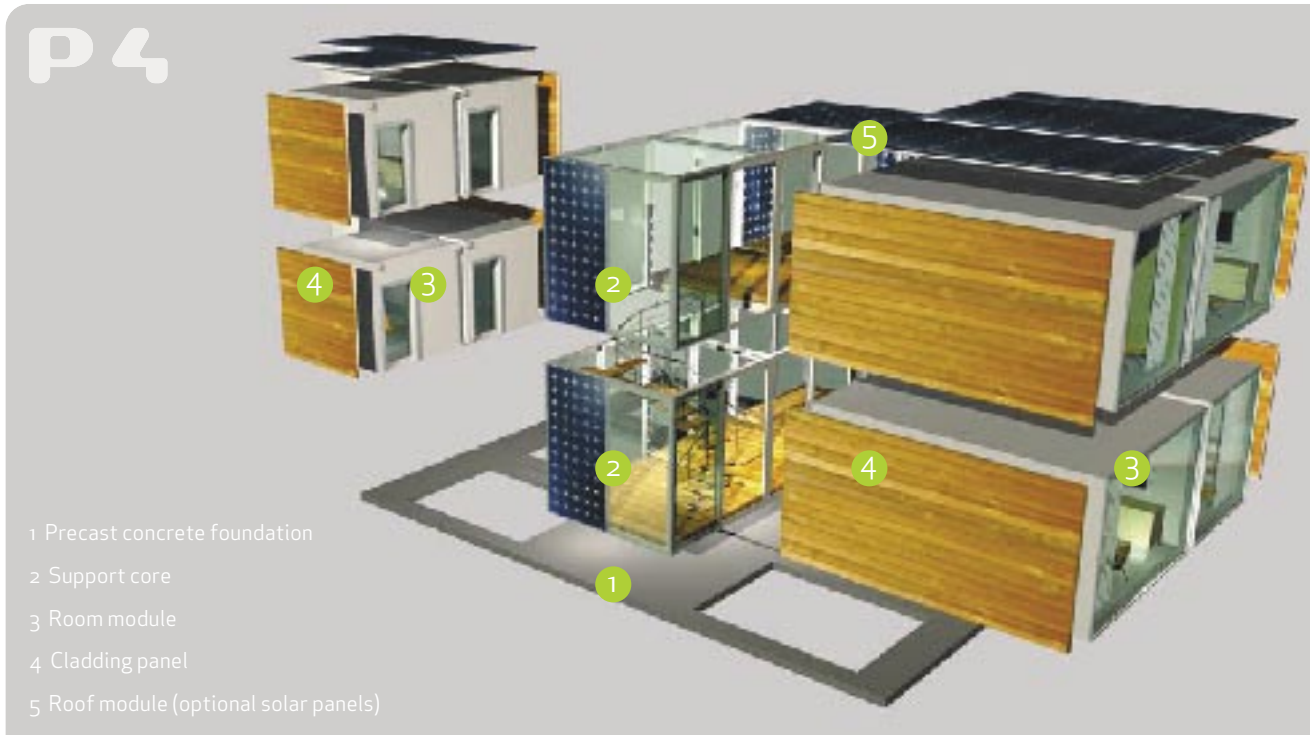
Main picture. A wire-free living room.

Top. A kid's bedroom.

Bottom. The structure is light, warm, strong and fire proof.

Some of the world's best companies are making rooms for us. Imagine a living room with the latest entertainment systems built in. Perfect acoustics, amazing screens and all wire-free. Or a designer kitchen that is a perfect combination of practicality and beauty. We can even make kids rooms like giant toy boxes.

And all the components are made in a controlled factory environment so a finished room is delivered to site as a sealed, fully tested unit. Spotless, perfect and ready to use.



Main picture. The main P4 components.

Top/Bottom. You can swap two rooms in about six hours.

Pad uses big building technology. There are three main stages: first, the precast reinforced concrete foundation and incoming services module are installed on site. The support core is then built off this foundation. The house is then completed by adding rooms around the core. To meet any planning permission or zoning requirements we then finish the house in a range of materials.

If you want to add a room just plug it in. All the services are built in so it's really easy. You could install a sauna in hours or add a micro-flat and become a landlord overnight.

If you want to change a room, just unplug the one you don't want and swap it for a new one. The whole process takes about four hours. No mess. No disruption.

We've made it easy to design, build and deliver your Pad so that you are in control at every stage. There are five basic steps: guide price, fixed price, order, make and move in.

Guide price	Fixed price	Order	Make	Move in
You	You	You	You	You
choose the house design you like choose the rooms you need tell us about your site tell us about any specific requirements	visit the site with your architect	sign a purchase order and pay a deposit	relax and feel free to visit the site or the factory at any time	meet your architect on site walk around your Pad make sure you are 100% satisfied pay the balance due
We	We	We	We	We
calculate a guide price for you tell you more about your architect	draft a detailed proposal containing: technical specifications scheme design drawings a total, fixed price a payment schedule a project plan warranty information	obtain permissions draft detailed design drawings draft a detailed project plan	prepare the site manufacture all the components and deliver everything to site assemble your Pad and connect the mains services check everything thoroughly	run through the handover pack hand over your keys wish you all the best in your new home
Next steps	Next steps	Next steps	Next steps	Next steps
if you are happy with the guide price and want to go ahead we can help you arrange site surveys	if you want to go ahead we help you sort out financing	we finalise your move in date	we prepare a handover pack and help you arrange to move home	love your new house
Cost	Cost	Cost	Cost	Cost
free	free	20% deposit (typical, confirmed in step 2)	no payment at this stage	80% balance due

1

2

3

4

PAD

Built for life™
www.padlife.co.uk

AA

DD

Pad is a trading name of Building Dynamics (UK) Limited.
Copyright © Building Dynamics (UK) Limited 2005. All rights reserved.
Images copyright © Neutral 2005.

FUS.ion

Vertriebsbüro Deutschland

FUS.ion Germany GmbH
Heidenkampsweg 45
20097 Hamburg

martin.witt@fusion-germany.com

Tel.: +49 (0) 40 254 990 790

Fax: +49 (0) 40 254 990 791